



Communtiy Features

Honey Creek is notable for our unique country setting, attractive designs, and convenient location. We are within walking distance of shopping, restaurants, parks, and more.

Interior Features

- Wood-Burning Fireplace
 - Washer & Dryer
 - Garbage Disposal
 - Bright Open Kitchen
 - Linen Closet
 - Deck or Patio
 - Storage off Deck
 - Cable T.V.
-

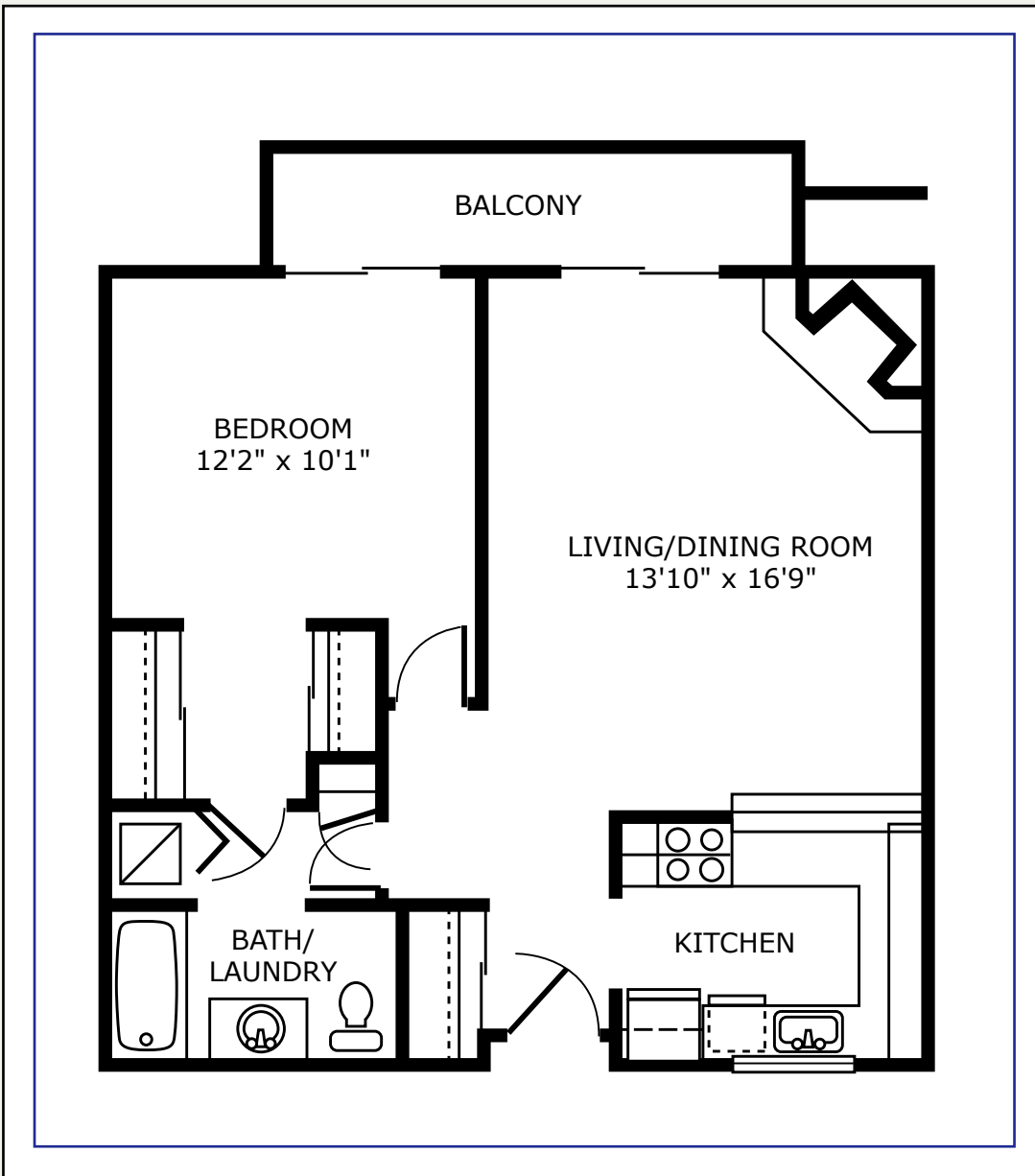
Community Features

- Childrens' Play Area
- Weight & Exercise Room
- Indoor Spa Pool
- Sauna
- On-Site Management & Concierge Service (package delivery, video library, fax machine, morning paper, refreshments)
- Free Covered Parking
- Garage & Storage Available
- Located Only 5 Minutes from Boeing



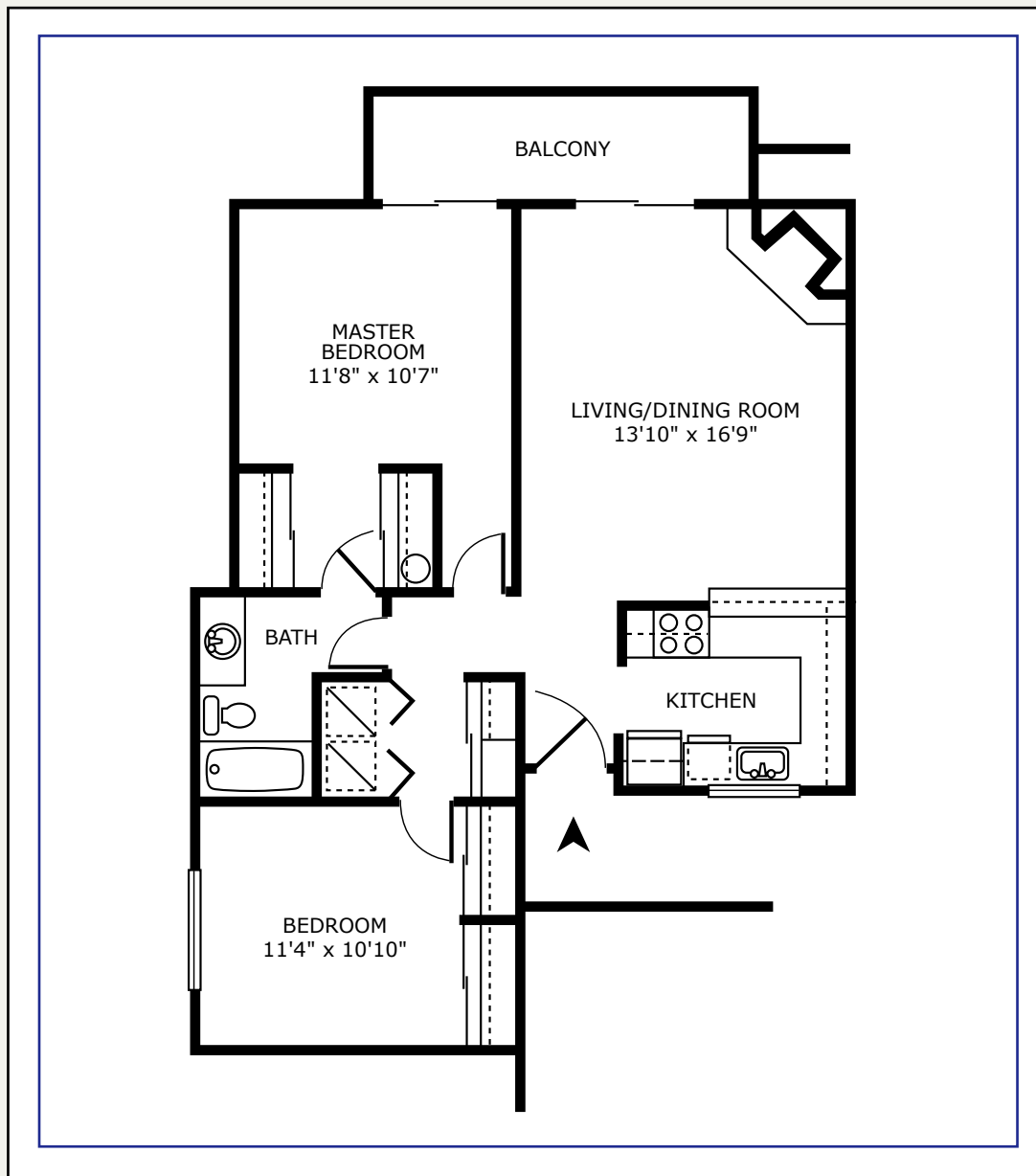
One Bed / One Bath

760 sq. ft



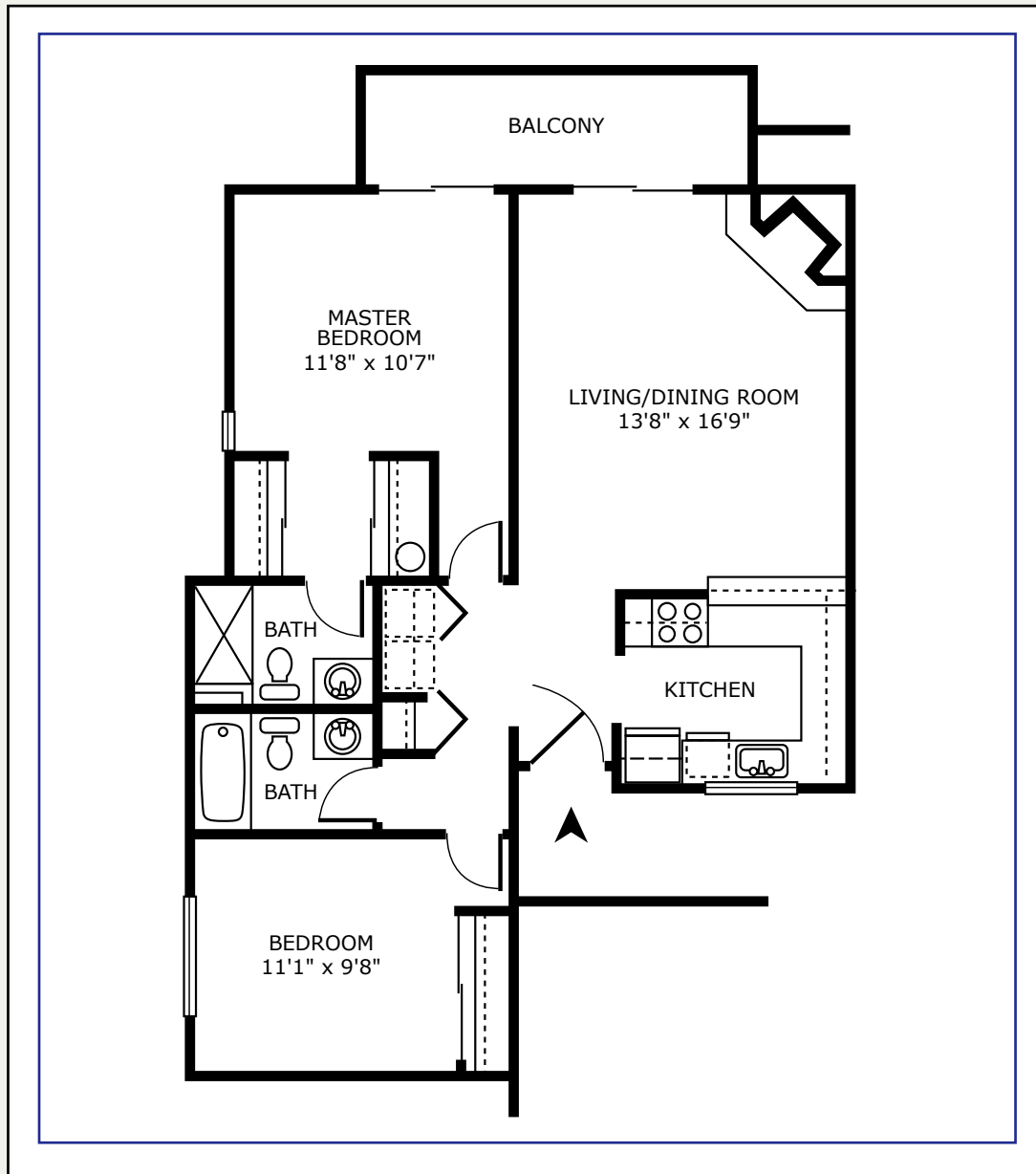
Two Bed / One Bath

900 sq. ft



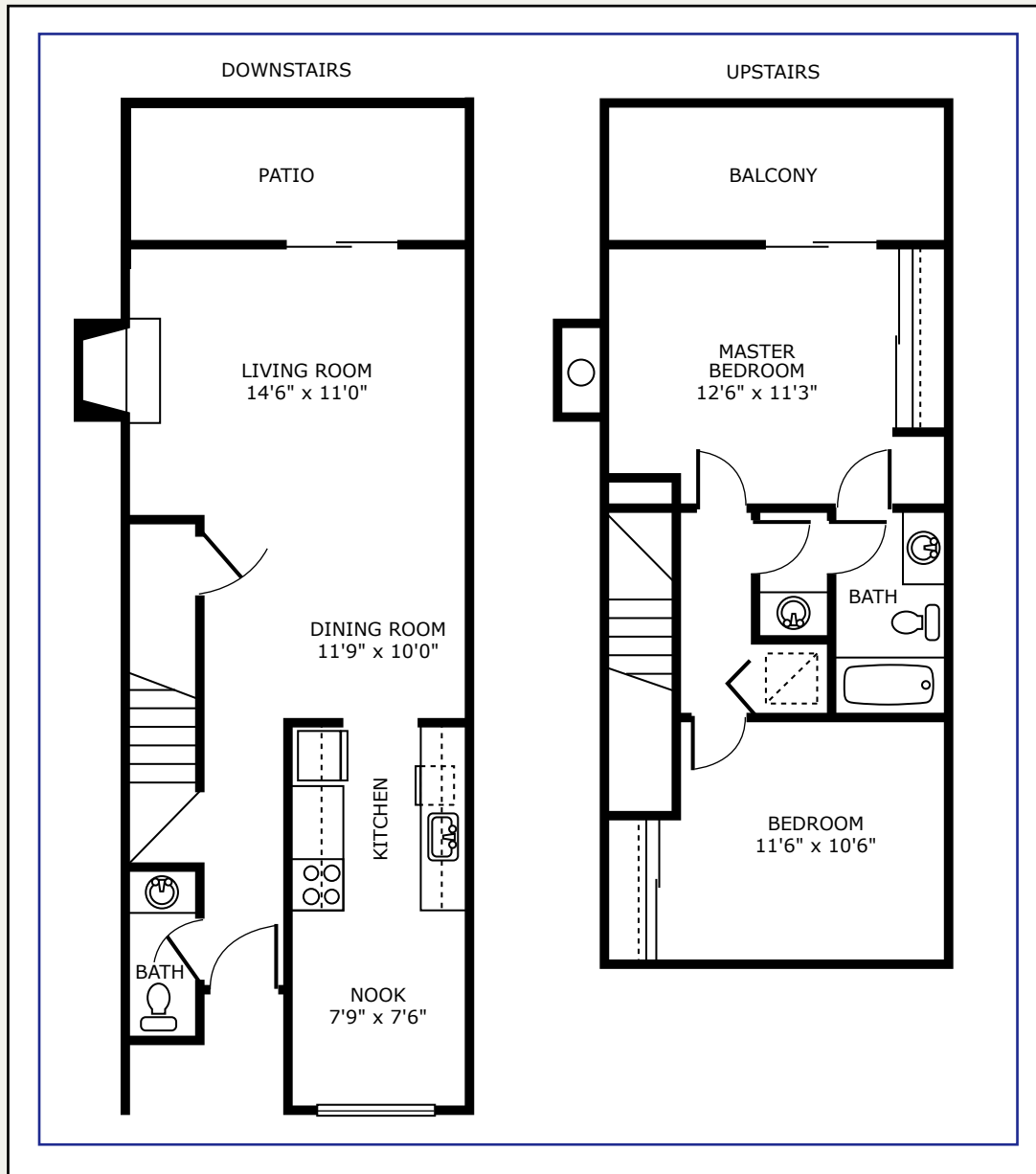
Two Bed / Two Bath

929 sq. ft

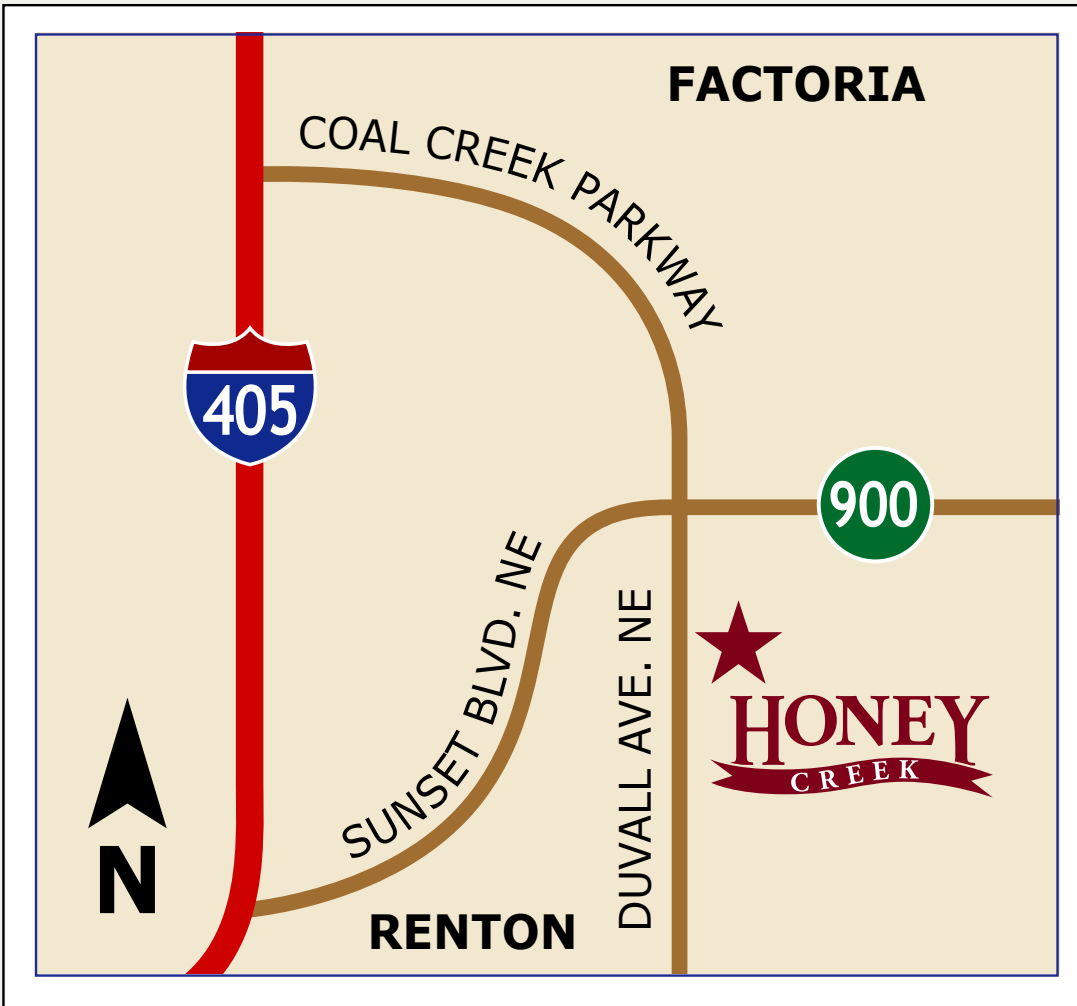


Townhouse

1060 sq. ft



Driving Directions



(from I-405)

- Take Sunset Blvd. Exit
- Go East to Duvall Avenue
- Turn Right on Duvall Avenue
- Honey Creek is on your left

